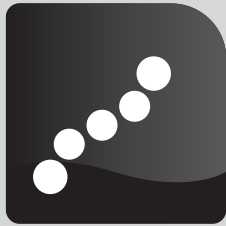


# TRACK AND TRACE YOUR VEHICLES



## FM TRACER

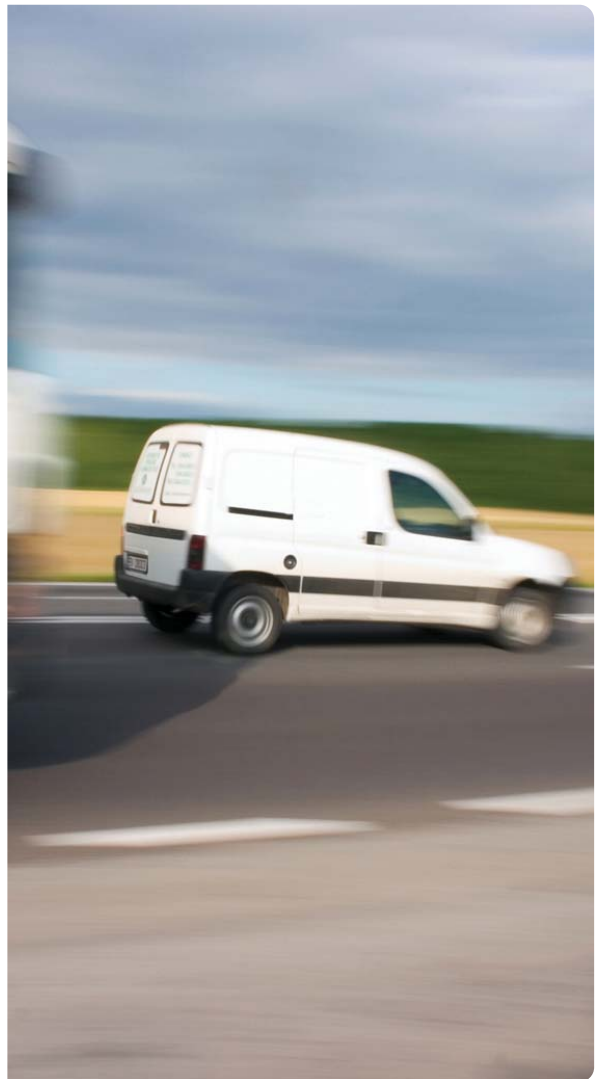
Track your vehicles in real-time, anytime, anywhere.

### BENEFITS

- Always know where your vehicles are
- Always know where your vehicles were
- Know what events occurred, where and when
- Monitor entry into high risk or no-go zones
- Improve driver behaviour
- Enhance security for both driver and vehicle
- Reduce risk
- Increase productivity
- Reduce operational costs
- Improve customer service

### FEATURES

- Real-time vehicle tracking easily pinpoint's your vehicle's current location
- Trip replays show previous routes travelled and movement history (plotted on a map or in a movement report)
- Detailed Trip, Movement and Activity Timeline and Event reports.
- Servicing and License Management, includes service records, vehicle licensing and roadworthy details.
- Set automated reminders for upcoming services and license renewals.
- Immediate notification of serious violations and events via SMS or Email (i.e. Optional Panic / Assist Button pressed, entry into No-Go Zone)



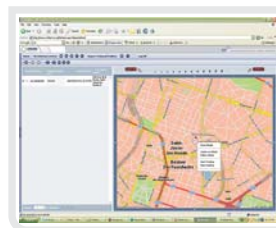
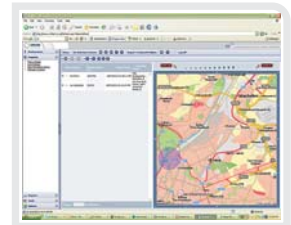
## SOLUTION COMPONENTS

The **FM 3310i** on-board computer includes an internal GPS and GSM module to record GPS positions along with trip information and to enable remote communication between office and vehicle for real-time tracking.

The **FM 3310i** is equipped with a Backup Battery which starts to operate as soon as the supply to the main battery is cut. Tracking continues without interruption.

The **optional Garmin FM Interface** allows for the connection of a Garmin Portable Navigation Device to FM Protector to which jobs can be dispatched, which can route the driver to the exact job location, as well as facilitating the sending and receiving of text messages.

Two-way voice communication is possible when using the **optional FM Voice Kit**, which allows for hands-free operation.



## WEB-BASED BUREAU SERVICE

FM-Web is an Internet based service that delivers your fleet information to you over the web.

This service includes a secure web front-end which is feature-rich and allows you to manage your vehicle or fleet without the need to install any additional software on your PC.

You simply access the Internet from any workstation to receive the information, while we take care of the administration of the fleet systems, including the management of data, hosting facilities, etc.

Your vehicle or fleet information will be available to you at anytime, anywhere.

## BENEFITS

- A 24/7/365 national response centre
- Information accessible anytime, anywhere
- No need to buy additional software and expensive maps
- Your data is managed in a secure hosting environment
- A user-friendly solution
- Ongoing return on investment

DEALER STAMP

TERMS AND CONDITIONS APPLY